

CLOTHES CLOSET



It seems the good news of the clothes closet has reached more folks in our area. We are averaging 35 families each week, with many of them shopping for six or more family members. We have a lot of regular clients, but we see many new faces weekly.

God's provision is evident, as the clothes closet relies solely on donations! **Thank you** for your donations of quality, in-season clothes.

We have been blessed to have new volunteers join our Tuesday sorting team and our Wednesday shopping assistants team. With their help, we're able to process donations and assist clients more quickly.



The clothes closet could use donations of the following items for men, women, and children:

- Winter coats
- Shoes
- New socks

We could especially use men's/young men's clothing and shoes.

GOOD NEWS STORY


In October, our Sunset Church community donated more than 2,100 lbs. of food (which speaks volumes, pun intended, considering how much cereal we received!), and over 50 bags of clothes! This was a big boost in the quantity of items in the pantry and for Pack the Pack. It also increased the number of coats, shoes, and socks available to clients.



FOOD PANTRY

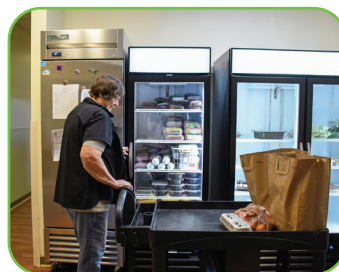
Food levels in the pantry are holding steady thanks to the stabilization of food availability from the Oregon Food Bank and support from our retail shopping team. This ensures that we are able to serve all who come to the pantry each week. **Between January 1 and November 15, 2023, the pantry served over 14,400 people. Compare that to all of 2022, in which we served 11,481 people.**

Over the summer, Helping Hands was awarded a \$10,000 grant from the City of Beaverton to purchase foods that are culturally relevant to our clients and/or foods that aren't available from the Oregon Food Bank, such as fish, tofu, cheese and yogurt.

Unfortunately, food costs and the economy have taken a toll on pantry funds, and we will be running a deficit in fiscal year 2024. If year-end giving is part of your plan, please consider donating to Helping Hands to provide for vulnerable families in our community. Twenty dollars provides a family with 4-5 days of food. We welcome your financial donations, whether by cash/check, or online at our website: sunset.church/give/. Or you can use this QR code: 

Currently, our most wanted items in the food pantry are:

- Family-size cereals
- Applesauce cups
- Tomato sauce



PACK THE PACK



We are again supporting William Walker and Aloha-Huber Park schools in the Beaverton School District. Our PTP lead, Kristen Gustafson, communicated with the counselors at each school to determine our service levels for the 2023-24 school year. We are delivering 25 bags per week to William Walker and 26 per week to Aloha-Huber, which is an 8% increase from last year. Using feedback from the schools, we have streamlined the food list to both reduce costs and support the increase in students served.

Pack the Pack needs donations of:

- Applesauce cups
- Granola bars